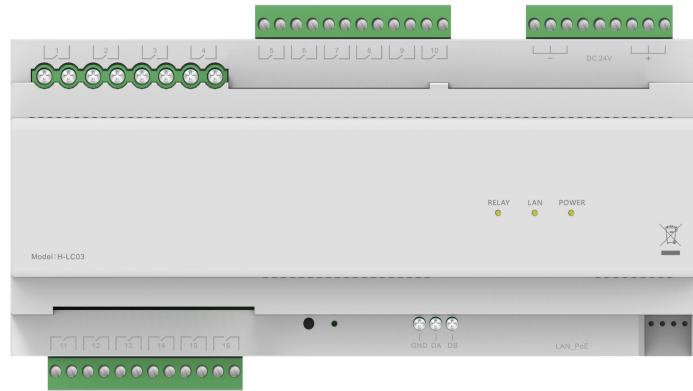


H Series- Lift Control Module User Manual V1.1

H-LC03



● Product Overview

This is a lift control module for the H Series IP intercom system, it controls directly the lift or forwards the lift control command from indoor monitor and outdoor station.

➤ Lift Control:

When the building intercom system unlocks (by calling, card swiping, password etc.) or control lift from the indoor monitor, the intercom system will then send an RS485 control command to the lift to control.

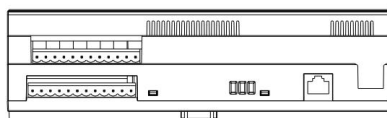
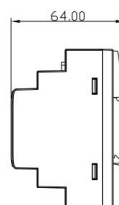
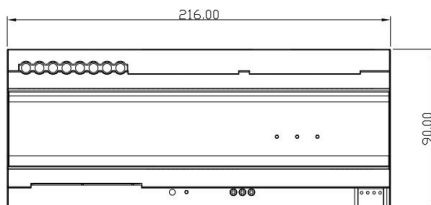
● Parameters

NO	NAME	PARAMETER	NO	NAME	PARAMETER
1	Working Voltage	24V	6	Transmitting Distance CAT5	Max. 100M
2	Working Current	130mA	7	Transmitting Distance RS485	Max. 300M
3	Power Ripple	100mV	8	RS485 Match Resistor Up/Down	Optional 120Ω
4	POE Voltage	48V	9	Working Temperature	-10℃~+55℃
5	Working Humidity	35%~90%	10	Storage Temperature	-30℃~+70℃

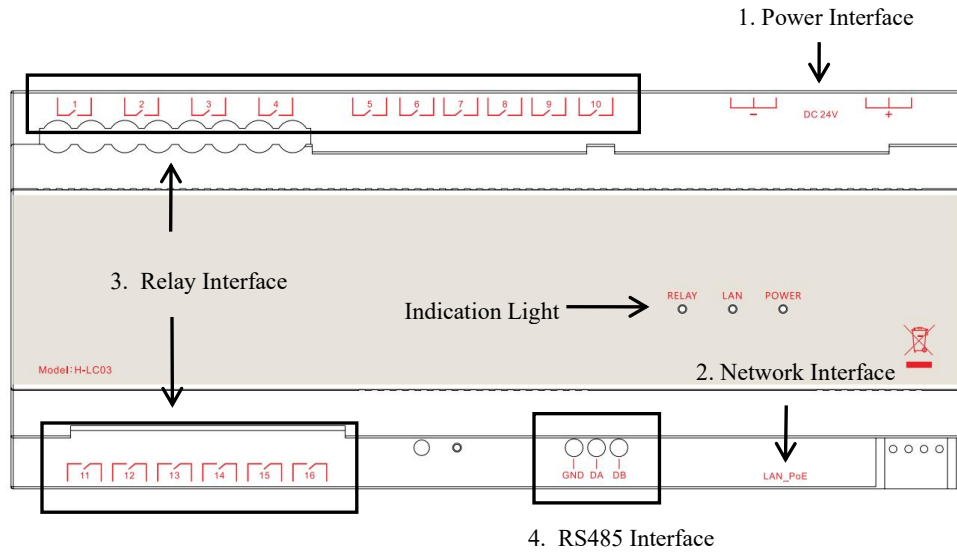
● Product Dimension

2

L×W×D: 216×90×63.4 mm



● **Instruction**



Interface Description:

1. Power Interface: DC+ 24V input, support standard 48V PoE (1236 port), DC - as power -
2. Network Interface: support TCP/IP LAN port in PoE
3. Relay Interface: totally 16 folds relay, default relay NO, 3 relays for every floor, first relay serves as uplink relay, the second as downlink relay, the third as authorizing relay. E.g. If the floor starts from Floor 1, then C1 is the uplink relay of Floor 1, C2 is the downlink relay while C3 serves as authorizing relay, C4 as uplink relay of Floor 2, C5 downlink of Floor 2, C6 authorizing relay of Floor 2...
4. RS485 Interface: connection for RS485

Indication Light Description:

POWER: lights on when DC power or PoE power is connected

LAN: when network is connected, the light is on GREEN; when RS485 signal in transmission the light will flash, light will OFF when there's a IP conflict

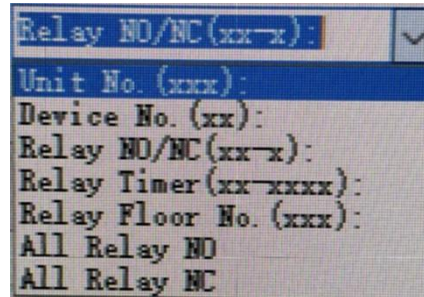
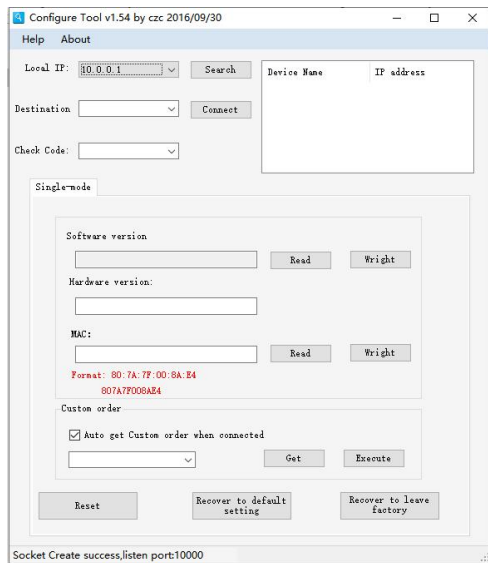
C1-C16: green light by the side of relay will be ON when relay is connected, and flash when relay works well

● **Installation Instruction**

	<p>Step 1: Install and fasten DIN rail</p>
	<p>Step 2: Fix the upper part of the device and then push down the lower part to fasten the device on the DIN rail.</p>

● Building, Unit, Device Number Setting

This device should be set with the same building, unit, device number as of the outdoor station to work well. The number of building, unit, device will be set by in configuration software. Details as follows:



1. Set PC IP address to 10 network segment IP, subnet mask 255.0.0.0. Start the software, choose IP as Local IP
2. Type in verification as ALL, the config software has default verification code when produced
3. Connect PC and lift module to switch and click Search to automatically obtain target IP (of lift module)
4. Click Connect to connect config software and lift module
5. Configure the device based on your actual needs:
 - ① “Unit No.(XXX):” to set the device unit number (0-999), first 2 digits as building number, third digit as unit number
E.g., (011) represents that the lift control module is building No.1 and unit No.1.
 - ② “Device No.(X):”, setting up the device number (1-16, starting from 1).
E.g., (1) represents the lift control module is the No. 1 module.
 - ③ “Relay NO/NC(XX-X)”, setting a single relay normally open/normally closed. The default relay is NO.
E.g., (1-1) represents that relay "1" is normally closed, and (1-0) indicates that relay "1" is normally open.
 - ④ “Relay Timer (XX-XXXX) ”, setting the connected time of each relay.
E.g. (1-1) means relay "1" connected time for 1 second , and (1-60) means the connected time of relay "1" is 60s.
The default connected time of the lift call of up and down is 1 second, and the default connected time of the authorized relay is 60 seconds, and the range is adjustable from 1 to 3600s.
 - ⑤ “Relay Floor No.(XXX)”, the starting floor of configurable modules ranges from -8 to -1,1 to 64.
E.g., (1) means that the starting floor of the lift control module is the first floor, and (-8) means that the starting floor of the lift control module is the -8th floor.
 - ⑥ All Relay NO/All Relay NC, means to set the relay of the whole module to normally open or normally closed.
One-click shortcut to set all relays of the module as normally open or normally closed.

Inputting the number after the colon, click active button, the network maybe be disconnected, as the IP address has been modified. Re-click the “Search” button to search the Internet, then continue to execute the next step.

Note: “X ” as a single digit, if the number of digits is insufficient, it will be automatically filled with 0.

● Caution

1. Keep devices away from strong magnetic field, high-temp and wet environment
2. DO NOT fall the devices to the ground or make them get hard impact
3. DO NOT use wet cloth or volatile reagent to clean the device
4. DO NOT disassemble the device without professional guidance